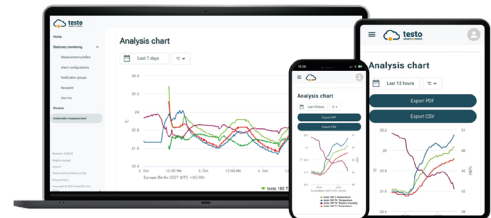


Monitoring system

testo 164 – Mini online data logger system for monitoring temperature and humidity



Limit value violation alarms by push notification, e-mail or (optionally) SMS

Connection to the testo Smart App: Simple commissioning, push alarms and dashboard

Automatic measurement value documentation in the testo Smart Connect Cloud

Data transmission to Gateway via proprietary wireless connection

Small size & unobtrusive design



The payable Testo Data Monitoring Licence is required to use the system.



The testo 164 online data loggers are part of the testo 160 online data logger system. They record measurement values (temperature and humidity) and send them directly to the testo Smart Connect Cloud via a WLAN connection.

If limit values are exceeded, the testo Smart App alerts you directly via push notification of limit value violations. Alternatively, you can be notified by email or SMS.

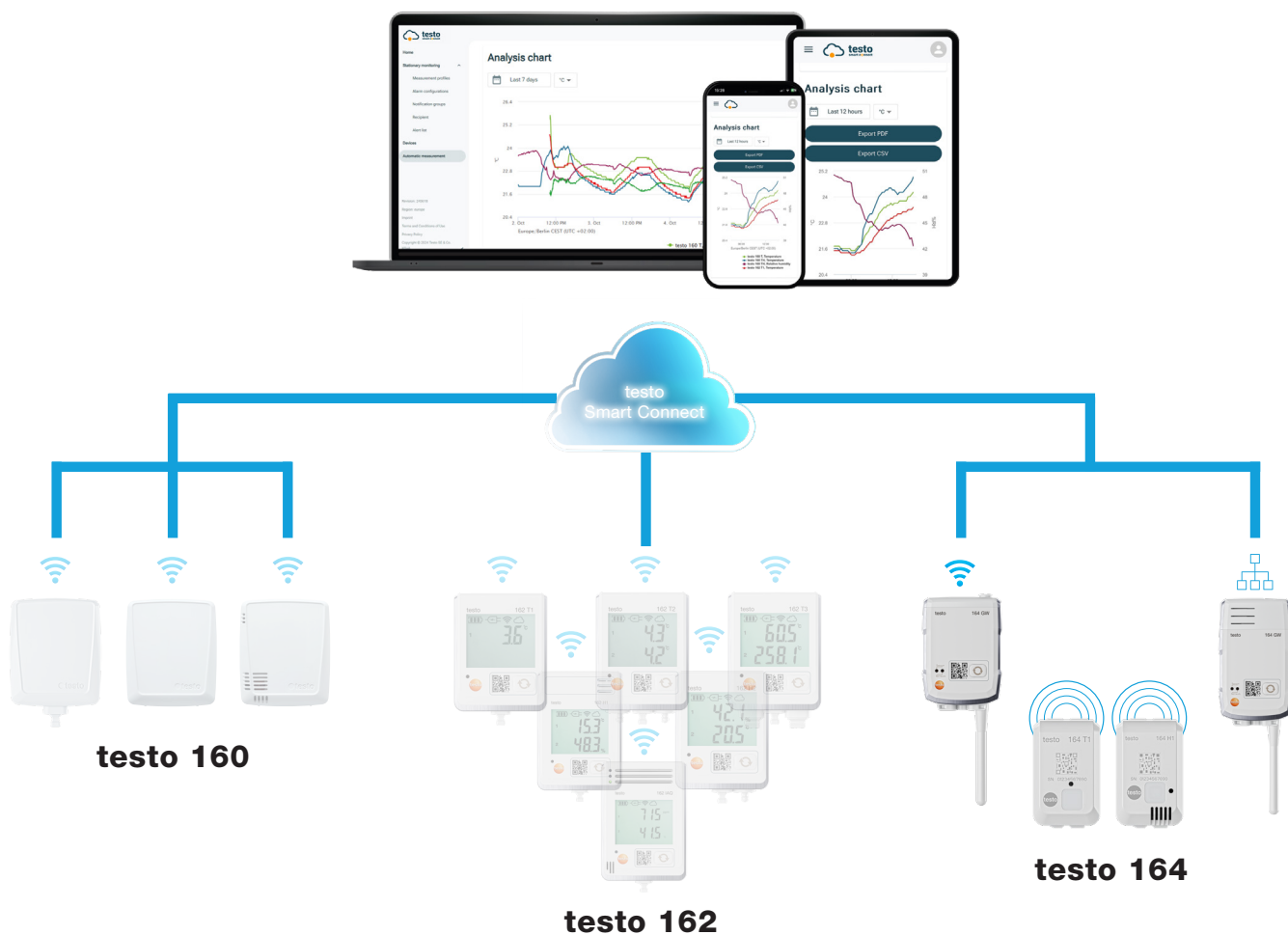
You can access all measurement data and analysis functions anytime and anywhere with your internet-enabled smartphone, tablet, or PC.

A valid license must be purchased to operate the online data loggers in testo Smart Connect (Data Monitoring License).

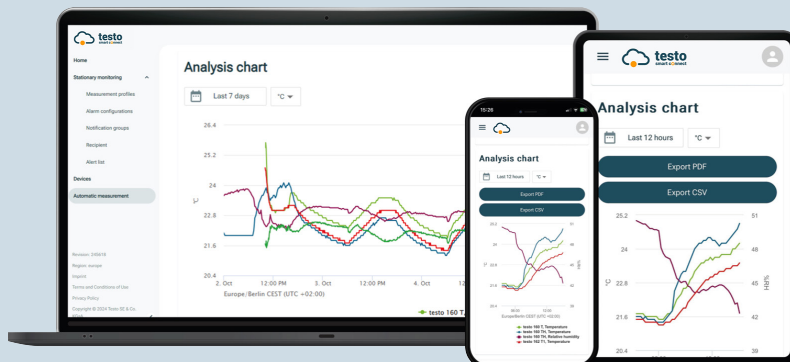
How indoor climate monitoring works with the **testo 160 online data logger system**

The testo 160 online data logger system consists of the hardware components (testo 160, testo 162, testo 164), testo Smart Connect and testo Smart App. testo Smart Connect is the central data platform. Measured values can be viewed and analyzed there.




The products testo 160, testo 162 and testo 164 offer you maximum flexibility thanks to their wide range of variants and can be easily combined and expanded in your Testo account.



Automated measurement monitoring. Thanks to cloud connection.



With the online data loggers connected to testo Smart Connect, your indoor climate monitoring takes place effortlessly in the background. You don't have to do anything yourself – the process is fully automated. You can access all measurement data in the cloud via smartphone, tablet or PC. All you need is a valid license and to set up the system once: configure the online data loggers and set limit alarms. The rest takes care of itself.

- 
Central control for monitoring and managing all measuring points
- 
Automatic transmission and documentation of readings, alarms when limit values are exceeded
- 
All readings can be accessed anytime and anywhere
- 
Link to the testo Smart App for further smart benefits

**Check out
testo Smart Connect
now!**



Order no. Data Monitoring License: 0526 5161

Order data for online data loggers

testo 164 T1

testo 164 T1 - Mini online data logger with integrated temperature sensor



Order no. 0572 1641 xx

testo 164 H1

testo 164 H1 - Mini online data logger with integrated temperature and humidity sensor



Order no. 0572 1644 xx

testo 164 DC

testo 164 DC - Mini online door contact data logger



Order no. 0572 1646 xx

testo 164 Gateway Ethernet

testo 164 GW - Gateway for mini online data loggers with Ethernet



Order no. 0572 1649 xx

testo 164 Gateway WLAN

testo 164 GW - Gateway for mini online data loggers with wireless LAN



Order no. 0572 1648 xx

Technical data for testo 164 mini online data loggers

	Mini online data logger testo 164 T1	Mini online data logger testo 164 H1	Mini online door contact data logger testo 164 DC
Temperature measurement			
Sensor type	digital	digital	Door contact
Measuring range	-30 to +85 °C	-10 to +50 °C	-
Accuracy (±1 digit)	±0.5 °C	±0.5 °C	-
Resolution	0.1 °C	0.1 °C	-
Humidity measurement			
Sensor type	-	digital	-
Measuring range	-	0 to 100 %RH (non-condensing)	-
Accuracy	-	≤ ±5 %RH (0 to <10 %RH) ≤ ±3 %RH (10 to <35 %RH) ≤ ±2 %RH (35 to <65 %RH) ≤ ±3 %RH (65 to <90 %RH) ≤ ±5 %RH (90 to 100 %RH) ≤ ±1 %RH hysteresis ≤ ±1 %RH drift per year ≤ ±0.06 %RH/K (0 to 60 °C)	-
Resolution	-	0.1 %RH	-
Connectivity			
Standard	Sub 1 GHz (IEEE 802.15.4)		
Security	-		
Wireless Range (Logger to Gateway)	50 to 120 m		
Certificates/Approvals			
	EN12830, HACCP, NSF	-	-
General information			
Operating temperature	-30 to +85 °C	-10 to +50 °C	-30 to +85 °C
Storage temperature	-30 to +85 °C	-30 to +60 °C	-30 to +85 °C
Protection class	IP67	IP20	IP67
Measuring cycle & communication cycle	1 min to 24 h		
Memory	300 readings		
Voltage supply	Battery (non-replaceable)		
Battery life (measurement & communica- tion cycle of 15 min)	8 years		
Dimensions	62.6 x 38 x 17.5 mm		
Weight (including batteries)	15 g	15 g	17 g

Technical data for testo 164 mini online data loggers

	Gateway for mini online data logger testo 164 Gateway WLAN	Gateway for mini online data logger testo 164 Gateway Ethernet
Temperature measurement		
Sensor type	Data transmission	Data transmission
Connectivity		
Standard	Sub 1 GHz / WLAN	Sub 1 GHz / Ethernet
General information		
Operating temperature	0 to +50 °C	
Storage temperature	-30 to +60 °C	
Protection class	IP65	IP42
Measuring cycle & communication cycle	Permanent connection	
Memory	0	
Voltage supply	External power supply 4xAA backup battery	
Battery life (measurement & communication cycle of 15 min)	Switch-off after 10 minutes	
Dimensions	69 x 105 x 29 mm	69 x 119 x 29 mm
Weight (including batteries)	220 g (with batteries)	250 g (with batteries)
Maximum number of connected data loggers	30	30

1981 037X/dk/04.2026

Subject to change, including technical modifications.

Accessories

	Order no.
Magnetic adapter for wall bracket	0554 2001

